

Abbotsford's 2013 VitalSigns® Report



MESSAGE FROM THE CHAIR

Abbotsford Community Foundation has been a vital part of helping people give back to their community for 34 years. Through our stewardship of gifts from citizens and organizations, we have been able to grant over \$3 million in our history to local charities and \$3 million in scholarships and bursaries to Abbotsford high school grads.

A strong community is a reflection not only of its past but also its future. In anticipation of what may lay ahead for our community, the Abbotsford Community Foundation made the decision to participate in Vital Signs®, a program of the Community Foundations of Canada, the national membership organization for more than 190 community foundations across the country.

Vital Signs® is an annual community check-up conducted by community foundations across Canada that measures the vitality of our communities, identifies issues and trends, and provides citizens with an opportunity to assign grades in a range of areas critical to our quality of life. It is this local focus that gives Vital Signs® its power. This year we have chosen to focus on seven of the possible 13 issue areas and corresponding indicators and next year we will survey the remaining six.

Abbotsford Community Foundation is very proud to present the first Vital Signs® report for Abbotsford. Our hope is that this report will help inform and guide not only the decisions we make as a Foundation, but those of individuals and other organizations working in support of our community's well being.

This report could not have been completed without the help of our Vital Signs® Community Leadership Team (listed on the last page of the report) and the more than 330 Abbotsford citizens who completed the Vital Signs® online survey.

We ask that you read the report and consider the issues raised ... and then step forward and help make Abbotsford a better place to live.

Sincerely,

Wendy Neufeld

Wendy Neufeld, Chair
ABBOTSFORD COMMUNITY FOUNDATION



ABBOTSFORD
COMMUNITY
FOUNDATION



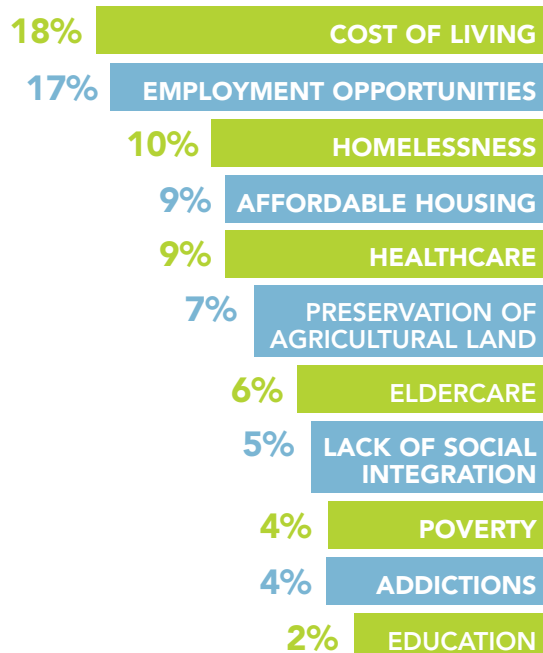
25%

SAY THAT THE **NATURAL ENVIRONMENT** IS ONE OF THE BEST THINGS ABOUT ABBOTSFORD

ABBOTSFORD'S ISSUES

What are the most important issues facing Abbotsford today?

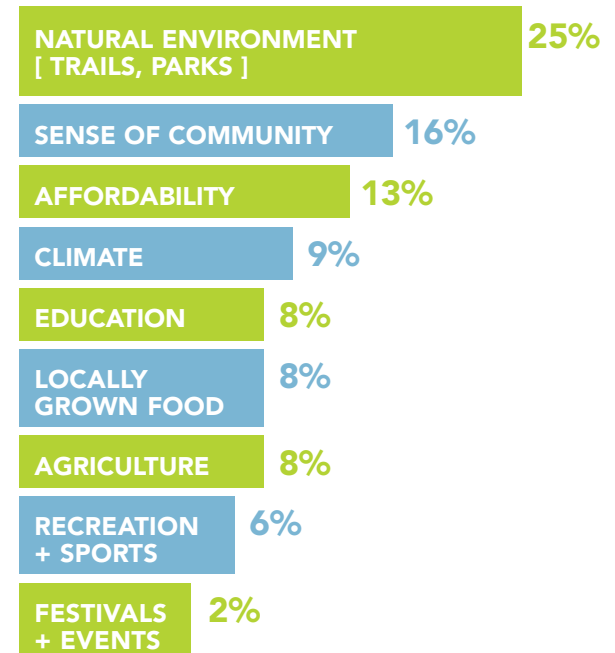
NOTE: The below percentages were based on the number of responses of those who chose one of the 11 options listed below. Approximately 9 per cent of the total number of those who responded to this question provided their own "important issue" facing Abbotsford.



THE BEST OF ABBOTSFORD

What are the best things about Abbotsford?

NOTE: The below percentages were based on the number of responses of those who chose one of the nine options listed below. Approximately 10 per cent of the total number of those who responded to this question provided their own "best thing" they liked about Abbotsford.



FOR FULL DOCUMENTATION & FULL STATISTICS
VISIT: WWW.ABBOTSFORDCF.ORG

VitalSigns®
Community foundations taking the pulse of
Canadian communities.



Abbotsford's 2013 VitalSigns® Report

METHODOLOGY

INDICATOR SELECTION

As part of a national initiative of 26 community foundations publishing Vital Signs reports, we agreed to publish a set of common indicators for cross-country comparisons. Overall, there are twelve areas of interest in the Vital Signs projects plus Food Security. However, since Abbotsford Community Foundation is participating in this process for the first time, it was decided that six areas of interest would be selected. These areas include:

- 1 The Gap between Rich and Poor
- 2 Housing
- 3 Health and Wellness
- 4 Getting Started
- 5 Learning
- 6 Belonging and Leadership plus Food Security

We used existing data collected from a variety of national, provincial and local sources. The sources of indicators used in the 2013 Vital Signs report are available at the Abbotsford Community Foundation webpage at www.abbotsfordcf.org as is the long version of Vital Signs Abbotsford.

GEOGRAPHIC SCOPE

Much of the data cited in this report is available at the Abbotsford-Mission Census Metropolitan Area (CMA), and at the Fraser Valley Regional District (FVRD) level.

GRADING

Many of the indicators used in Abbotsford's Vital Signs project have been graded by local citizens. The idea was to capture people's views on issues within the region and then to include these with available data to compare perceptions with reality and identify Abbotsford's strengths and weaknesses. What is working well in our community and what needs improvement. Grading was done through an on-line survey in August and September. 330 surveys were completed.

- A Excellent, stay the course
- B Good, but improvements could be made
- C Average performance, suggest additional effort be made to address these issues
- D Poor performance, additional work is required
- F Failure, immediate action is required

If the letter grade received more than 40% of the responses, it is shown as a simple grade (e.g. "B"). If no grade received 40% or more of the votes, the grade shown represents a combination of the two most popular responses (e.g. "B-").

The complete 2012 Abbotsford Vital Signs Report (long version) and a list of the all the sources of the statistics included in both reports can be found at www.abbotsfordcf.org.



GAP BETWEEN RICH AND POOR

Gap between annual minimum wages and "living wages" over \$22,000 for family of four with two working parents

LIVING WAGE IN THE FRASER VALLEY

In 2013, the living wage for the Fraser Valley was calculated at \$16.37 per hour. This calculation is based on two adults working 35 hours each per week while providing a home for two children. This would provide for a household income (before tax) of \$59,569 per year to meet basic expenses. The current provincial wage is \$10.25 per hour for which the same family would only earn \$37,310 per year (before tax).

OVERALL POVERTY RATE RISES SLIGHTLY

In 2010, the overall poverty rate in Abbotsford-Mission (CMA), based on the Low Income Measure (LIM)² after tax, an indicator of relative poverty, was 19%. This was up slightly from 18.9% in 2009. The 2010 figure is higher than the national average of 17.8% and lower than the provincial average of 19.6%.

² According to Statistics Canada, the LIM is a fixed percentage (50%) of median adjusted household income, where "adjusted" indicates that household needs are taken into account

CHILD (0-17) POVERTY RATE FALLS SLIGHTLY

In 2010, the child poverty rate in Abbotsford-Mission (CMA), based on the LIM, was 20.3%. This was down slightly 20.8% in 2009. The 2010 figure was higher than the national average of 18.9% and lower than the provincial average of 21.7%.

ELDERLY (65+) POVERTY RATE INCHES UP

In 2010, the elderly poverty rate in Abbotsford-Mission (CMA), based on the LIM, was 8.3%. This was up slightly from 8.1% in 2009. The 2010 figure is higher than the national average of 7.7% and the same as the provincial average of 8.3%

POVERTY RATE OF SINGLE-PARENT FAMILIES

Based on the Low Income Measure (LIM), After Tax. In 2010, the poverty rate of single-parent families in Abbotsford-Mission (CMA), based on the LIM, was 38.7 per cent, down 0.8 per cent from 39.4 per cent in 2009. The 2010 figure was higher than the national average (31.7 per cent) and higher than the provincial average (34.9).

HOUSING

SURVEY GRADE: C

SHELTER COSTS:

Affordable housing is defined as spending less than 30% of before tax income on housing costs (CMHC). While the majority of owner and tenant households at all levels spend less than 30% of their total income on shelter costs, a sizeable proportion of households spend more.

In the City of Abbotsford, 24% of owner households and 39% of tenant households spend more than 30% of their income on shelter costs.

For the Abbotsford-Mission (CMA), the percentages are only slightly higher with 25.5% of owners and 40% of tenants spending more than 30% of income on shelter costs. This compares with the BC provincial level of 24% of owners and 45% of tenants spending more than 30% of income

on shelter costs. Nationally, 18.5% of owners and 40% of tenants spend more than 30% of their income on shelter costs.

Abbotsford is slightly more affordable for tenants and owners than the CMA. However, while the percentage of owners spending 30% or more is on par with the province it is higher than the national level. This may reflect the higher cost of homes in BC.

HOMELESSNESS COUNT

2005-2011 Fraser Valley Homeless Count. In 2005, the homelessness count in Abbotsford was 226. Abbotsford recorded 235 people in 2008 and 117 in 2011 which is a decrease of 50%. This compares to Mission with 100 people counted in 2008 and 54 in 2011 which is a decrease of 46%. The next homeless count is planned for 2014.

RENTAL VACANCY RATES (%) 2007-2010

In the Abbotsford-Mission (CMA) in 2012, the rental vacancy rate of two bedroom apartments was 3.9 per cent, higher than the average for all CMAs (2.2 per cent). The rental vacancy rate was down from 5.8 per cent in 2011.

Abbotsford's 2013 VitalSigns® Report

GETTING STARTED

YOUTH UNEMPLOYMENT RATE

In 2012, the youth (15-24 years old) unemployment rate in Abbotsford-Mission (CMA) was 14.5 per cent. This was 0.2 percentage points above the national youth unemployment rate of 14.3 per cent and 1.3 percentage points above the provincial average of 13.2 per cent. The youth unemployment rate has increased 1.0 percentage points from 13.5 per cent in 2011.

CHILD CARE SPACES AND COST

In Abbotsford for 2012, there were 1597 licensed child care spaces with 1166 designated specifically for children under the age of 5 in 117 daycare facilities. According to the 2011 census, there were 8,530 children in Abbotsford between the ages of 0-4. Fees for spaces are usually between \$600-\$900 per month, depending on the type of daycare provided. Some group centers charge \$900 and up. These rates are for full time care in Abbotsford for toddlers and preschool aged children. Part time rates would be relative to the full time rates.

MIGRATION

In Abbotsford-Mission (CMA), 1.58 per cent of the population (2,610 persons) in 2011 had lived outside the province, territory or country within the previous 12 months, compared to 1.68 per cent for Canada and 1.19 per cent in British Columbia. In Abbotsford, 6.04 per cent of the 2011 population lived outside the province, territory or country within the last 5 years, compared to 6.64 per cent in Canada and 9.25 per cent in British Columbia.

AVERAGE COST OF UNIVERSITY UNDERGRADUATE TUITION

In the 2012 to 2013 academic year, the average cost of undergraduate tuition in Abbotsford (University of the Fraser Valley) was \$3,864 for Canadian students and \$12,720 for International Students. The average tuition cost in BC for Canadian students was \$5,586 and in Canada \$4,931.

AVERAGE UNIVERSITY ENROLLMENT

In the 2011 to 2012 academic year, the average undergraduate enrollment in Abbotsford (University of the Fraser Valley) for full-time students was 5,800 and 2,190 for part-time students.

HEALTH + WELLNESS

SURVEY GRADE: C-

TOTAL PHYSICIANS PER 100,000 PEOPLE

In 2011, there were 139 physicians per 100,000 Fraser East (HSDA) residents. This rate is lower than the national rate (209 physicians per 100,000 people) and was an increase of 8.6 per cent from 128 physicians per 100,000 people in 2002.

SURGERIES WAIT TIMES

Wait times at the Abbotsford Regional Hospital and Cancer Center (July 2013)

> 50TH PERCENTILE tells you the length of time that half the people on the list have waited for surgery.

> 90TH PERCENTILE tells you the length of time that the majority of people (90%) have been waiting for their surgery.

The length of time that half (50%) the people on the list have waited for surgery.



THE AVERAGE COST OF UNDERGRADUATE TUITION IN ABBOTSFORD (UFV) WAS \$3,864. THIS IS BELOW THE NATIONAL AND BC AVERAGE FOR CANADIAN STUDENTS.

For example, the wait time for fractal surgeries for 50% of the people on the list is 0.4 weeks or 3 days. The wait time for 50% of people on the list for Varicose Veins Ligation/Stripping is 20.9 weeks.

The length of time that the majority of people (90%) have waited for their surgery.

For example, the wait time for fractal surgeries for the majority of people on the list is 8.3 weeks. The wait time for the majority of people on the list for Varicose Veins Ligation/Stripping is 107.4 weeks or over two years.

HEALTH PROMOTION

Fraser Health has five Abbotsford offices/institutions and their related health promotion programs/initiatives. These include Abbotsford Health Protection Office, Abbotsford Home Health Office, Abbotsford Mental Health Office, Abbotsford Public Health Unit and Abbotsford Regional Hospital and Cancer Centre. There are at least 19 other organizations (both public and private) that contribute to health promotion in Abbotsford.

LIFE EXPECTANCY AT BIRTH

On a 3 year average between 2007 and 2009, Fraser East (HSDA) had a life expectancy of 80.6 years, 0.62 per cent lower than the national life expectancy (81.1). Life expectancy in Fraser East (HSDA) has increased by 1.9 years from 78.7 years in 1997.

PROFILE OF ABBOTSFORD

Population Profile of Abbotsford-Mission (CMA) and the City of Abbotsford using 2011 - Census Data.

In 2011, the population of Abbotsford-Mission (CMA) was 170,191. In 2006, the population was 159,020. The population has risen 7% in 5 years. Population density in 2011 is 281.2 per square kilometer.

In 2011, the population of the City of Abbotsford (Census sub-division) was 133,497. In 2006¹, the population was 124,258. The population has risen 7.4% in 5 years. Population density is 355.5 per square kilometer.

MEDIAN AGE at 38.2 years, the median age in Abbotsford-Mission (CMA) in 2011 increased by 2.8 years from a median age of 35.4 in 2001. The median age was lower than the national level (40.6 years) and the provincial level (41.9 years).

MARITAL STATUS of Abbotsford-Mission (CMA) of population of 15 years and over (137,850).

In 2011, 60% of the population 15 years and over were either married or living with a common-law partner. 26% were single; 3% were separated; 6% divorced; and 5.5% were widowed.

FAMILY STRUCTURE of Abbotsford-Mission (CMA). There are 47,405 census families in private dwellings. Of those 40,245 (85% of census families) are couple families (both married and common-law). 45% of the couple families have children at home. 55% of couple families do not have children at home. There are also 7,160 (15% of census families) lone parent families.

SHARE OF YOUTH (UNDER 15) IN POPULATION (POST-CENSAL ESTIMATES) On July 1, 2012, youth and children aged under 15 in Abbotsford-Mission (CMA) constituted 18.1 per cent of the total population. This was a 3.2 percentage point decrease from 21.3 per cent in 2001. This share was greater than the national share (12.0%) and the provincial share (14.8%).

SHARE OF ELDERLY (65 AND OVER) IN POPULATION (POST-CENSAL ESTIMATES) On July 1, 2012, the elderly in Abbotsford-Mission (CMA) constituted 14.5 per cent of the total population. This was a 0.8 percentage point increase from 13.7 per cent in 2001. This share was below the national share (14.9%) and provincial share (15.9%).

MEDIAN (CENSUS) FAMILY TOTAL INCOME: In 2010, in Abbotsford-Mission (CMA) the median total family income was \$62,320. This level is below the national median income for families of \$69,320 and the provincial level of \$66,970.

PROPORTION OF POPULATION CLASSIFIED AS A VISIBLE MINORITY for Abbotsford-Mission (CMA) and the City of Abbotsford using 2011 Census data.

In 2011, 25.5 per cent of the population in Abbotsford-Mission (CMA) were classified as a visible minority, up 7.7 percentage points from 17.8 per cent in 2001. The proportion of the population classified as visible minorities in Abbotsford (CMA) was higher than the national proportion of (19.1%) and lower than the provincial proportion (27.3%) in 2011.

In 2011, 29.6 per cent of the population in the City of Abbotsford were classified as a visible minority, up 9.2 percentage points from 20.4 per cent in 2001. The proportion of the population classified as visible minorities in Abbotsford was higher than the national proportion (19.1%) and higher than the provincial proportion (27.3%) in 2011.

¹Please note this is an adjusted count due to boundary changes.

Abbotsford's 2013 VitalSigns® Report



THE ABBOTSFORD FOOD BANK DISTRIBUTES FOOD TO 3,000 PEOPLE A MONTH. OF THOSE 40% ARE CHILDREN



FOOD SECURITY

Abbotsford food bank use higher than provincial and national rates.

In 2007, the proportion of households in Fraser East (HSDA) that were moderately or severely food insecure was 4.9. This rate is below the national rate of 7.1 per cent and below the provincial rate of 7.3 percent.

FOOD BANK USE

According to the Abbotsford Food Bank they distribute food to 3,000 people a month. Of those 40% are children. Provincially, children make up 29.5% of those using food banks and nationally they make up 38.4% of those using food banks. This means that Abbotsford rates of children using the food bank are higher. 18% of Abbotsford Food Bank clients are working adults compared with 11.4% in B.C. and 11.7% in Canada. The percentage of working adults

using the Abbotsford food bank is higher than provincial and national rates.

ACCESS TO LOCAL FOOD

There are two local Farm and Country Markets that operate part of the year in Abbotsford. There are 8 community gardens around Abbotsford with another 4 in neighbouring areas.

FOOD PRODUCTION

In Abbotsford as of 2011, there were 935 farms that grew crops. This represents 35,678 acres or 14,438 hectares. (This does not include greenhouses). There were also 459 farms reporting by industry group producing livestock (including beef cattle, hog/pig, poultry/egg, sheep/goat, other animal).

LEARNING

SURVEY GRADE: B

PROPORTION WITH POST-SECONDARY EDUCATION

In 2012, 42.6 per cent of the population in Abbotsford-Mission (CMA) aged 15 and older had received post-secondary education. This rate is 11.0 percentage points below the national average (53.6 per cent) and 10.1 percentage points below the provincial average (52.7 per cent). The Abbotsford rate is up 1.7 percentage points from its 2011 rate (40.9 per cent).

PROPORTION OF THE POPULATION (15 YEARS AND OVER) THAT HAVE NOT COMPLETED HIGH SCHOOL

In Abbotsford-Mission (CMA), 21.2 per cent of the population (15 years and over) in 2012 had not completed high school, down 5.9 percentage points from 27.1 per cent in 2000. The rate was higher than the national average (19.1

per cent) and higher than the provincial average (15.6 per cent).

ABORIGINAL POST SECONDARY COMPLETION RATES FOR PERSONS AGED 25 TO 64

In 2011, 82.7 per cent of the Aboriginal population aged 25 to 64 in Abbotsford-Mission (CMA) had at least one certificate, diploma, or degree, an increase of 10.0 percentage points from the 2006 rate of 72.6 per cent. The Abbotsford-Mission (CMA) proportion in 2011 was above the national rate of 71.1 per cent and above the British Columbia rate of 75.0 per cent.

ABBOTSFORD SCHOOL DISTRICT COMPLETION RATE

This refers to the percentage of students who graduate from high school within six years of starting grade 8. In 2010-11, the percentage of all students in the Abbotsford district who completed in six years was 88.6%. This compares to all students in the public schools for the province at 80.3% and to Mission district at 77.1% and Chilliwack district at 71.6%. Abbotsford district has higher rates of completion.

BELONGING + LEADERSHIP

SURVEY GRADE: B

PERCENT OF TAX FILERS

MAKING CHARITABLE DONATIONS

In 2011, the per cent of tax filers in Abbotsford-Mission (CMA) who were charitable donors was 21.6 per cent. This figure is lower than the national level (23.0 per cent) and slightly lower than the provincial level (21.7). The percent of tax filers making charitable donations decreased 0.4 percentage points from 22.0 per cent in 2010.

MEDIAN CHARITABLE DONATIONS

In 2011, the median amount of charitable donations in Abbotsford-Mission (CMA) was \$630. This amount is higher than the national level (\$260) and the provincial level (\$370). The median amount of charitable donations increased from \$620 in 2010. This is the highest median rate in Canada.

VOLUNTEER RATE

In 2010, the volunteer rate for Abbotsford-Mission (CMA) was 52.0 per cent. This figure is higher than the national level (47.0 per cent) and higher than the provincial level (46.6). The volunteer rate increased 6.8 percentage points from 45.2 per cent in 2007.

PERCENTAGE VOTER TURNOUT FOR 2008 AND 2011 FEDERAL ELECTIONS

In 2011, the voter turnout in Abbotsford-Mission (CMA) was 59.0 per cent. This figure is lower than the national level (61.1 per cent) and lower than the provincial level of voter turnout (60.4 per cent). The voter turnout decreased 0.5 percentage points from 59.5 per cent in 2008.

POPULATION REPORTING A STRONG OR SOMEWHAT STRONG SENSE OF COMMUNITY BELONGING

In 2012 in the Fraser East Health Service Delivery Area (which includes Abbotsford-Mission (CMA)), 65.6 per cent of people aged 12 and over reported a strong or somewhat strong sense of community belonging, higher than the 2011 level of 60.6 per cent. The 2012 level was lower than the national average of 66.1 per cent, and lower than the provincial average of 67.6 per cent.

LIFE SATISFACTION: PERCENTAGE (AGED 12+) SATISFIED AND VERY SATISFIED

In 2012 in the Fraser East Health Service Delivery Area (which includes Abbotsford-Mission (CMA)), 89.2 per cent of people responded that they were satisfied or very satisfied with their overall life, a decrease from the 2011 level of 89.8 per cent. The 2012 level is lower than the national average of 92.4 per cent and lower than the provincial average of 91.0 per cent.

FOR MORE ON FOOD SECURITY GO TO ABBYNEWS.COM

ABBOTSFORD VITAL SIGNS COMMUNITY LEADERSHIP TEAM

- SUSAN MCALEVY, EXECUTIVE DIRECTOR
Abbotsford Community Foundation
- DR. KATHERINE WATSON, VITAL SIGNS PROJECT MANAGER
University of the Fraser Valley
- LINDSAY BABINEAU, EXECUTIVE DIRECTOR
BC Agriculture in the Classroom Foundation
- WAYNE GREEN, EXECUTIVE DIRECTOR
United Way of the Fraser Valley

- MANPREET GREWAL, MANAGER, MULTI-CULTURAL AND IMMIGRANT INTEGRATION SERVICES
Abbotsford Community Services
- SHAIROSE JINNAH, MANAGER, COUNSELLING, YOUTH & FAMILY SUPPORT SERVICES
Abbotsford Community Services
- REUBEN KOOLE, SENIOR PLANNER
City of Abbotsford

- LENORE NEWMAN, CANADA RESEARCH CHAIR IN FOOD SECURITY AND THE ENVIRONMENT
University of the Fraser Valley
- BEV OLFERT, EXECUTIVE DIRECTOR
Abbotsford Youth Commission
- ANDREA SENFT, COMMUNITY DEVELOPER
Abbotsford School District 34

PARTNERS:



COMMUNITY FOUNDATIONS OF CANADA
all for community.



FOR FULL DOCUMENTATION & FULL STATISTICS VISIT: WWW.ABBOTSFORDCF.ORG