



ABBOTSFORD
COMMUNITY
FOUNDATION

COMMUNITY IMPACT REPORT

2023 YEAR AT A GLANCE

Message from the Chair

If I look back on the past year I would characterize it by “getting our feet back on the ground.” While there are no shortage of challenges, somehow they seem a bit more known and predictable.

In spite of some below average returns in our investment portfolio, we have continued to grant out monies to worthy individuals and organizations albeit at reduced levels. I want to thank the entire Board for digging into those financial decisions that needed to be made.

In the year ahead, I see the opportunity for ACF to cultivate donor relationships that are more customized especially as they relate to estate planning. Going forward, we see some donors wanting to partner with ACF in different ways and we want to be open to those conversations.

I would like to conclude by simply saying that I believe ACF has an important role to play within the Abbotsford community and we look forward to the year ahead.



Marcus Janzen
Board Chair

Our Vision

Together we build a stronger, more caring community.

Our Mission

To inspire philanthropy and develop partnerships by investing in people, projects, and programs to strengthen our community.

Our Strategic Priorities

- Grow our endowment funds
- Deepen our impact through granting
- Raise our Foundation profile

Our Values

Caring, engaged, responsible, trustworthy, accountable.

Board of Directors



Bryan Born
1st Vice Chair, Chair Fund Development Committee



Mark Driediger
Director, Chair Planned Giving Committee



Steve Willems
Director, Chair Marketing & Communications Committee



Rick Gendemann
Director



Marcus Janzen
Board Chair, Chair Agricultural Enhancement Grants Committee



Denise Thandi
2nd Vice Chair, Chair Community Grants Committee



Satvir Gill
Director, Chair Investment Committee



Lynne Harris
Director, Chair Nominations & Governance Committee



Leslie McConnell
Director



Andrea Senft
Past Chair



Jackie Hogan
Secretary/Treasurer, Chair Finance & Audit Committee



John Morrow
Director, Chair Student Awards Committee



Dr. Satwinder Kaur Bains
Director



Emily Anderson
Director



Areni Kelleppan
Executive Director

As I've taken on the reins of leading an organization with a rich history of positive impact in Abbotsford, I am both humbled and grateful for the warm welcome I have received by this community. It's truly a joy to be able to serve as the Executive Director of Abbotsford Community Foundation.

As I reflect on the incredible work we've accomplished over the past year - through our grantmaking, convening, connecting, and capacity building in our local community - we are only able to do so, thanks to the profound dedication and passion of our donors, partners, sponsors, volunteers, and a small but mighty team. Your unwavering support, commitment, and generosity have been instrumental in supporting a thriving, resilient, and vibrant Abbotsford.

Together, we granted \$1,431,886 this year as an investment into our local community, making a difference in the lives of thousands of community members from families, farmers, to young people.

In the spirit of gratitude, I extend my heartfelt thanks to each one of you. This year has presented us with challenges that have tested our resilience, creativity, and adaptability. Yet, in the face

of adversity, our community has demonstrated an inspiring ability to come together, innovate, and find solutions. Your generosity, kindness, and compassion has been the driving force behind our impact and continues to be our greatest strength.

I am looking forward to continued conversations with community - to listen to your insights, learn from your lived wisdom and experience, and gather your ideas for how we can continue to honour the work that has been done and commit to the work to come. 2024 will be a continuation of fostering inclusivity, showing kindness and grace, and working towards an Abbotsford that makes us proud to call home.

Staff



Tricia Taylor
Admin & Student Awards Coordinator



Sara Goetz
Grants & Administrative Coordinator



Jean Vanderbyl
Financial Coordinator

Inspire. Impact. Invest.

Abbotsford is a community with deep roots, great diversity, and an open and welcoming spirit. We count our residents as some of the most generous in Canada. Philanthropy exists in many ways, but the history of our organization speaks to a commitment of sustainable generosity.

Since its inception, Abbotsford Community Foundation has granted over \$18 million back into our community. With your help, we will continue to grow our endowments so that we can further invest in creating a lasting local impact that will inspire future generations.

The Community Foundation Difference

1

When you are **inspired to give**, you work with others who are also passionate about making Abbotsford the **best** it can be.

2

The impact of your gift will be felt **across our community**, both now and for years to come. We are **stronger** when we work together.

3

When you invest in ACF, we pool your gift with many others to provide grants that meet the **greatest needs** in our community.

Year at a Glance

2023 was a challenging year for ACF. While market returns were the poorest they have been in over a decade, we continued to support significant and emerging needs. We also saw an amazing commitment from our donors to make investments to strengthen Abbotsford - its people, its charities, its community.

Thanks to the support of our many stakeholders, we are able to celebrate the following:

Held our **8th Annual Smart & Caring Golf Classic** on September 14th, 2023 at Ledgeview Golf Club and raised over \$127,000 for our Smart & Caring Community fund.



Hosted our **National Philanthropy Day** on November 15th with nearly 100 community minded philanthropists in attendance. We heard inspiring stories from five local philanthropists and awarded six individuals/organizations with a Philanthropy in Action award.



The **Community Services Recovery Fund**, in partnership with Community Foundations of Canada and the Government of Canada, granted out \$701,000 to local charity, nonprofits and indigenous governing bodies in Abbotsford, Chilliwack, Hope and Agassiz. This granting program aimed to support organizations as they focus on adapting their operations through pandemic recovery.



Meaningful Impact

\$904,099
Total endowment gifts received.

\$18,014,160
Total endowment capital including one new endowment fund.

\$1,431,886
Total grants distributed directly into meaningful causes within Abbotsford.

\$3,010,000
Legacy Giving Pledges received partly through our What's Your Story program. The Reach Gallery Museum displays our Legacy book which highlights some of the stories of Abbotsford citizens and their contributions to our community.

Local Community Impact

ACF was conceived with a substantial donation by the Trethewey family to the Matsqui Parks and Recreation Commission in 1978.

The directors of the Commission at the time felt that the sizable donation could have a much longer effect on the community if it were invested in perpetuity, and revenues from the investment spent annually, pursuant to the intent of the donors. With the passing of time, this inspirational vision took root with the larger community, and the ACF experienced steady asset growth thanks to the continued generosity of thousands of people in the community.

Endowed Asset Growth

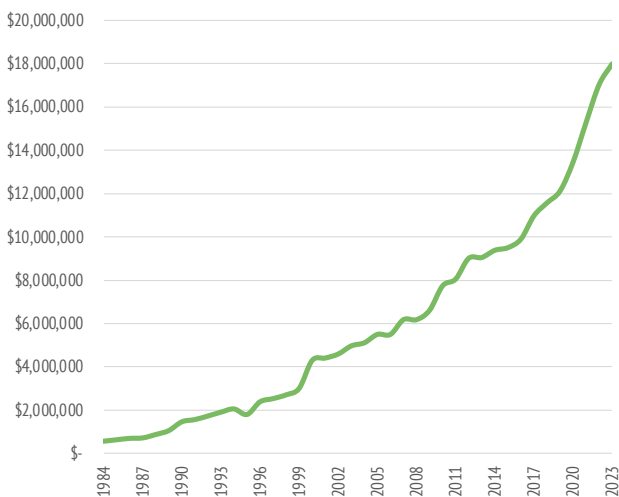


Figure 1 – Steady growth of the ACF endowment.

Granting History

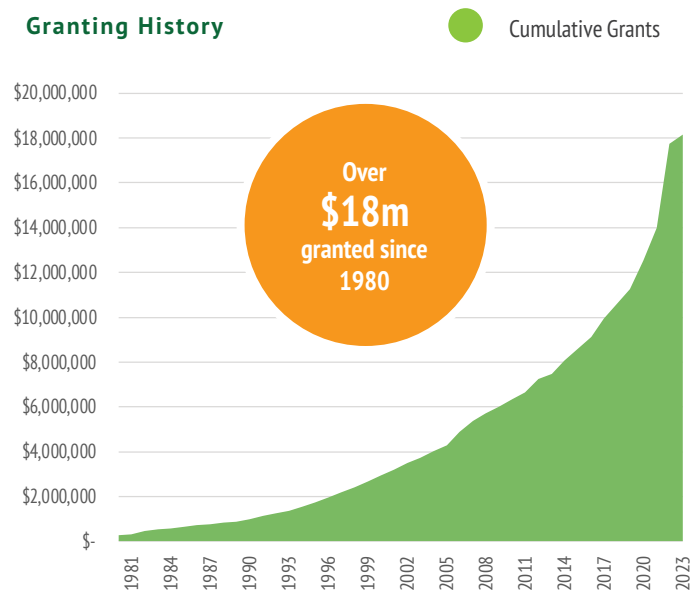


Figure 2 – The cumulative effect of annual grants reinvested into the community.

\$233,890

Total scholarships and bursaries allocated to 204 students which brings the total amount awarded since inception of this program in 1990 to \$6,767,890.

\$1,100,692

Granted to community charity partners from the Abbotsford Disaster Relief Fund, \$399,692, and the Community Services Recovery Fund, \$701,000.

\$292,259

Granted to community partner programs and projects, including our Smart & Caring Community Grants, Housing Grants, Mary Victoria Wakefield Animal Welfare Grants and Agricultural Enhancement Grants.

Student Awards Program

The ACF Student Awards Program allocated **\$233,890** in scholarships and bursaries to 204 Abbotsford high school graduates planning to attend post-secondary institutions.

ACF presently has 92 permanent student award endowment funds totaling **\$4,847,564**. These endowments have been established by community organizations, businesses, families, and individuals to support student awards in participating schools in Abbotsford.

Endowed Student Awards:

- Abbotsford 2004 BC Summer Games
- Abbotsford Chamber of Commerce
- Abbotsford Community Foundation
- Abbotsford Masonic Lodge #70
- Abbotsford Rotary Club
- Abby Senior Student Memorial
- Access to All
- Ajit Singh Sandhu Memorial
- Allstar Mechanical
- Al Pauls Memorial
- Ashley Lowey Memorial
- Bass Family Scholarship
- Beatrice Marchant Memorial
- Beehive Rebekah Lodge #67
- Bertram A. Bickford Memorial
- Brent Wilson Memorial
- Calder-Giacchini Memorial
- Carole Rempel Memorial
- Chad Driediger Memorial
- Chalk Spots
- Chris Dahl Memorial
- Christine Caldwell Memorial for the Arts
- Citadel Club Ted Perry Memorial
- Cst. John Davidson "Shine On" Memorial
- Dallas Saunders Memorial
- Darlene Gottschalk Memorial
- David Shore Memorial
- Derek Matty Passion for Life
- Douglas Ward McGimpsey Memorial
- Dr. John Muir Memorial
- Eileen Hardbattle Memorial
- Elizabeth Anne "Liz" Louwersheimer Memorial
- Emily Haw Memorial
- Erin Burgess Memorial
- Eugene Reimer Memorial
- Eveline Grace Hardy Memorial
- Fandrich Cone Harvesters
- Frank Huston Memorial
- Fraser Valley Brain Injury - John Simpson
- Frieda T. Wiens Memorial
- Friends of Abby/Reach for the Top
- Geissler Family Foundation
- Geoff Brown Memorial
- Geoff Cowell Memorial
- Geoff Horner Memorial
- Harry Sayers Memorial
- Hartley & Roslin Lovick Memorial
- Hurricanes Vaisakhi Educational
- James Fisher Memorial
- Jerry Alamwala Memorial - Agriculture
- Jill Nelson Memorial
- Jim Anderson Memorial
- John A. & Muriel Murphy Memorial
- Joshua Jensen Memorial
- Judith Ratzlaff Memorial
- Kari Bell Memorial
- Katie McKenzie Memorial
- Kevin Lloyd Memorial
- Kody Ramsay "Inspirational"
- Ledgeview Legacy
- Leslie Forman Reg. Nurse Memorial
- Let's Keep the Dream Alive
- Linda Marie (Busch) Jacobsen Memorial
- Main Chance
- Marion de Wit Memorial
- Mark Redekop Memorial
- Mary Selby Memorial
- Multicultural Diversity
- Natasha Buttar Memorial
- National High School Theatre Festival
- Pat & Dennis Healey - Science
- Patricia Huston Memorial
- Percy Darling Memorial
- Rachel Thiessen Memorial
- RHSS Social Innovation
- Robert & Brigit Bateman
- Robert Bateman Secondary Fine Arts/Technology
- Robert Bateman Secondary PAC
- Sam Posthumus Memorial
- Samuel & Isabella Gardner Memorial
- Sean Phillips Memorial
- Shane Travis Memorial
- Spencer Lightburn Memorial
- Tena Venema Memorial
- Tony Anning Memorial
- Trevor Paul Dueck Memorial
- Vandell Student Award
- Vicky Bach Memorial Nursing
- William A. & Violet Mercer Memorial
- W.J. Mouat Grad
- William J. Mouat Memorial
- Yale Lions Excellence
- Yvonne Potter Memorial

We understand that starting an endowment may seem daunting or unaffordable, but there are many options to help make your legacy a reality. You can offer a hand up to young people graduating and looking for post secondary education opportunities that may have seemed out of reach before your award. Call or email us today to discuss what's possible.

Did you know you can start your own student award for as little as \$50/month? You can offer a hand up to young people wanting to pursue their post secondary dreams. Call or email us today to discuss what's possible.



Annual Student Awards

Below is the 2023 list of community organizations, businesses, families and individuals who have established annual awards with ACF. To participate in our annual student awards program, donors must agree to annually fund an award for a minimum of three years.

- Abbotsford Career Fire Fighters IAFF Local 2864
- Abbotsford Dental Group
- Abbotsford Female Hockey Association
- Abbotsford Lions Club
- Abbotsford Minor Fastball Association
- Abbotsford Minor Hockey Association
- Abbotsford Music Educators
- Abbotsford Police Board
- Abbotsford Principals & Vice-Principals Association
- Abbotsford Soccer Association
- Abby's Music Society
- Aldergrove Royal Canadian Legion #265
- ASIA Sumas Mountain
- Badesha & Associates
- Beant Singh Dhaliwal Memorial
- Board of Education
- City of Abbotsford Fire Rescue Service Benevolent Society
- Cody Halfpenny Memorial
- Complete EyeCare Optometry
- Dalbir & Pirtveer Gill Award
- Design2Web IT
- Douglas Jacob Rexford Gosling Memorial
- Fraser Valley Auto Mall
- Fraser Valley Stage Memorial
- Fraserway RV LP
- GirlKIND Foundation
- Goetz Family Construction & Trades
- Gregory Potocky Memorial
- Gulf & Fraser
- Jacob Wilson Memorial
- Jerry Seikhon Memorial
- Joyce Primrose Memorial
- Legacy Productions
- Marcus Ortner – PREC
- Medical Tower Drugs
- Mierau Contractors Ltd.
- Mt. Lehman Community Association
- Overlanders Manufacturing
- Peter Dobson Memorial Golf
- Raghbir Riarh Memorial
- RDM Lawyers LLP
- RISE Annual Scholarship
- Rotary Club of Abbotsford – Matsqui
- Rotary Club of Abbotsford – Sumas
- The 1972 Abbotsford Senior Secondary Alumni
- Run For Water Global Development
- The Honda Way
- Tri-Link Systems Inc.
- Varing Marketing Group



Granting Impact

The Foundation's impact was inspiring in 2023 with over **\$1.4 million** invested into our community through grants and scholarships. The following areas are some of the key highlights:

\$57,744

Smart & Caring Community Grants

Each year, ACF's Community Grants Committee awards grants for projects, programs, and initiatives that support local children, youth, and families at risk. In 2023, the following 8 local charities received a Smart & Caring Community Grant:

- Abbotsford Hospice & Grief Support Society
Children & Youth Grief Support
- Abbotsford Police Foundation
2023 APF Celebrating Community
- Abbotsford Restorative Justice & Advocacy Association
The Graduated Mentoring Program
- Archway Community Services
Seva Food Program
- Cyrus Centre
Breaking Down Barriers - Crisis and Counseling
- Gathering Markit
Meal Kits
- InAsMuch Community Society
Heal & Thrive - Mental Health Helps for Refugees and Newcomers
- Salvation Army
Back to School Event



"Because of your funding, we were able to connect and support children and families in the community and partner with the Abbotsford School District. We supported students and families in our community who may need future support. We were able to facilitate lasting connections for members of our community, and we helped them to feel that they are not alone." - Abbotsford Hospice & Grief Support Society

"So many people showed up, and they lingered well after the movie was over. This year, we learned the kids found out about the event from friends who went last year and they insisted that their parents take them...it became apparent that the individual service members had an impact last year; a big enough impact to come back a year later to look for them." - Abbotsford Police Foundation

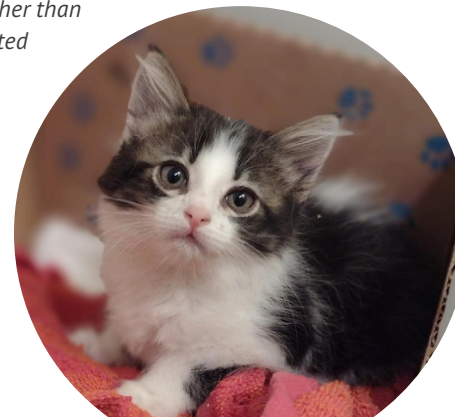


\$5,000

Mary Victoria Wakefield Animal Welfare

Every fall, ACF is pleased to invite local animal welfare charities to submit proposals for the Mary Wakefield Animal Welfare Grant. The fund representatives award grants to charities that support animals. In 2023, the following 5 organizations received \$1,000 each for their projects specific to animal welfare.

- Abbotsford Police Foundation - *Financial Care Package for Retired Police Service Dogs*
 - Elizabeth's Wildlife Centre Society - *Enhancing Survival Through Specialized Foods*
 - Paws for Hope Animal Foundation - *Better Together Abbotsford*
 - Senior Animals in Need Today Rescue - *Support Veterinary Costs*
 - Zajac Ranch Society - *Miniature Goat Shelter*
- "From March through June 2023, with your support, we were able to spay/neuter 30 individual cats. Each cat was provided permanent identification, anesthesia for surgery, and post-surgery pain medication. This allowed individuals facing financial barriers to keep their pets rather than surrender to a BC SPCA or have unwanted litters. The Abbotsford BC SPCA is also extremely grateful for the opportunity to assist in low-income spay/neuter initiatives for the first time - all due to this funding." - 2022 Grant Recipient, Abbotsford BC SPCA*



\$14,400

Housing Grants

Every two years ACF provides funds to charitable organizations for projects addressing homelessness within Abbotsford. This year were provided grants to the following two organizations:

- CEDAR Outreach Society - *Housing Navigator Program*
- Ground Zero Ministries - *Ground Zero Action Plan*



\$17,230

Neighbourhood Small Grants

These grants, in conjunction with the City of Abbotsford and the Vancouver Foundation, are provided to help fund small scale projects that help better connect communities. In 2023, the program aimed to:

- Tackle and address social isolation
- Build community strength and resilience
- Foster community creativity and well-being.

Some of the successful projects were Bee-Friendly in Your Neighbourhood Garden, Bevan Block Party, Horseshoe Fun Night at Mill Lake, Ceramic Comforts: A Healing Art Project, Summer Care Packages and many more. A total of 25 projects were funded in 2023 with over \$17,000 granted out.



"The goal of the project was to share information about planting gardens that are bee and pollinator friendly. It was nice to get to know some of the gardeners in our community and hear about their garden bee stories."

\$130,000

Agricultural Enhancement Grants

The Agricultural Enhancement Grants Program is a partnership between ACF and the City of Abbotsford. In 2023, ACF's Agricultural Grants Committee awarded 5 grants totaling \$130,000 to the following projects that focused on agricultural innovation to benefit Abbotsford's agriculture industry:

- BC Honey Producers' Association - *Evaluating a novel acaricide for the control of varroa mites in honey bee colonies used for pollination services in Abbotsford*
- British Columbia Institute of Technology & Volatus Aerospace - *Science Experiential Aerial Research (SEAR) Crop Disease Project*
- Invasive Species Council of BC - *Agricultural Invasive Species Mitigation*
- The University of the Fraser Valley & Ramsar Berry Farms - *Can we grow profitable, high-quality saffron in the Fraser Valley?*



Community Services Recovery Fund

ACF is uniquely positioned to bring grant funding to our community, which helps deepen our impact and invest in the future. Over the past few years, we've been working in collaboration with Community Foundations of Canada and the Government of Canada to launch a number of grant programs specific to Covid-19 response. In 2023, we were able to offer another grant opportunity for Abbotsford, Chilliwack, Hope and Agassiz, focused on Covid-19 recovery. The Community Services Recovery Fund (CSRF) was a unique granting opportunity to respond to the adaptation and modernization needs of charities and non-profits facing immediate and long-term impacts of the pandemic as they continue to support communities across Canada.



Funded by the Government of Canada's Community Services Recovery Fund



\$12,303

Chilliwack ElderCollege

Equipping Success will improve our not-for-profit's membership and registration processes, increase community engagement, advance our marketing capabilities and enhance our bookkeeping and training procedures. Additionally, strategic equipment acquisition will streamline our operations and increase our capacity for growth, allowing us to modernize and adapt to meet our organization's and community's evolving needs.

"Thanks to the generous funding we were able to purchase essential tools enabling us to efficiently serve our members, bridging the gap caused by the pandemic. This project has allowed us to engage with our community through outreach, provide access to our newsletter sign-up while out in the community, and give our volunteer and staff team the ability to serve the organization to our fullest capabilities. We're grateful for the support that has allowed us to thrive!"
- Steph Brubaker, Coordinator, Chilliwack ElderCollege



\$32,500

Chilliwack Film Society

The project will see an overhaul of our communication and technology and practices through a new web design and the implementation of tool Asana in partnership with a new communication strategy. The project will help support us by streamlining our operations whilst also implementing a modern design that broadens our reach and makes resources more readily available.

"The CSRF grant was instrumental in helping support the Chilliwack Film Society and allowing us to grow and expand our reach and, importantly, our impact on our community. Without the grant and the teams support, we wouldn't have been able to scale and implement new processes and technologies throughout our organization. We are eternally grateful for the CSRF grant and how it came at such a critical period and allowed us to not only maintain, but thrive."
- Taras Groves, Festival Director, Chilliwack Film Society

Chilliwack Metropolitan Orchestra

Provide a concert in the summer for the residents of our community. This will continue to give our orchestra a higher visibility in Chilliwack and enjoyment for everyone interested in attending our concerts, plus we also sorely need to purchase some instruments for the orchestra.

"We were able to return to the Chilliwack Cultural Centre, and put on two successful concerts last October and December. Again without [this grant] we would not have been able to make this successful return to the Centre." - Nigel Plumley, Chilliwack Metropolitan Orchestra

\$12,000



Abbotsford Community School Society

After staffing changes, post-pandemic, we could greatly benefit from having a photocopier in our office (that works!). We've had to drive to Staples each time we need print outs for our programs and this has become very costly and inconvenient for us - a new photocopier would streamline our society in so many ways and would benefit our team immensely.

"Though I am sure at first glance of our application, a photocopier sounded like an odd funding request, but it has been absolutely instrumental in the successful implementation of our programs this year. You have saved us so much time and money as our constant trips to Staples to print off our Lesson Planning Resources, Program Activities, Booklets for our Self Esteem Workshops, Recipe Books for our many Cooking Programs, Literacy Resources and our hundreds of Program Awards Certificates that we give out each term to celebrate the unique attributes that make each one of the kiddos in our programs special! Chloe the Copier is a valued member of our team here at the ACSS and we are forever grateful to you." - Anna McWhinney, Abby Community School Society

\$20,000



\$72,300

The Centre for Epilepsy & Seizure Education in BC

This project's aim is to analyze the internal structures of our organization and create a strategic plan to modernize in order to sustain and support the future of the organization. Modernization will be implemented through upgrading the technological systems to allow for remote work, adapting the organization name and mission statement, and remodeling the fundraising initiatives for continued sustainability.

"The grant allowed us to create a strategic plan aimed at sustaining and supporting the future of the organization. We've also upgraded our accounting procedures, enhanced our technology, and implemented a new fundraising plan. These improvements have allowed us to regain our momentum post pandemic" - Christine Petkau, The Centre for Epilepsy & Seizure Education in BC

We received 28 eligible applications for a total ask of \$1,730,950. With \$701,000 available for distribution, our Community Grants Committee had a difficult task ahead of them. We are so grateful we were able to approve 18 projects for this support.

- Abbotsford Arts Council - \$34,001
- Abbotsford Community School Society - \$20,000
- Abbotsford Judo Club - \$29,300
- Agassiz-Harrison Historical Society - \$13,692
- Archway Community Services - \$52,100
- BeMorr Society Mental Health and Suicide Awareness - \$15,000
- Big Brothers Big Sisters of the Fraser Valley - \$97,313
- Chilliwack ElderCollege - \$12,303
- Chilliwack Film Society - \$32,500
- Chilliwack Metropolitan Orchestra - \$12,000
- Chilliwack Park Society - \$22,200
- Communitas Supportive Care Society - \$82,819
- Hope and Area Transition Society - \$45,600
- Hope Community Services - \$30,000
- Optimist Club of Chilliwack - Imagination Library Fraser Valley - \$16,541
- Skwah First Nation - \$73,975
- The Centre for Epilepsy and Seizure Education in BC - \$72,300
- The Salvation Army Chilliwack - \$39,356

Abbotsford Disaster Relief Fund Progress Report

In response to the November 2021 floods, the Abbotsford Community Foundation, the Abbotsford Chamber of Commerce and the University of the Fraser Valley jointly established the Abbotsford Disaster Relief Fund (ADRF).

Initial funds were provided for the greatest critical needs - food, emergency supplies, whatever gaps those impacted by families needed most in the short term just to survive. Since that initial crisis period, we have transitioned to rebuild and recovery efforts with a focus on returning community members back into their homes and dealing with the mental health impacts of such a traumatic event.

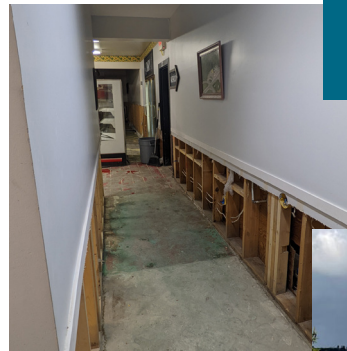


Key Partners in ADRF Distribution and On the Ground Support Services

Abbotsford Chamber of Commerce

The Chamber hosted a granting program for local businesses and farmers. Grant applications were adjudicated weekly to get funds out to local businesses needing their funds as soon as possible to reduce further damage, to help cover losses, or simply to clean up so they could re-open. Over 500 grants of a max. of \$3,500 were approved between December 2022 - March 2023. This was an unprecedented scale of work for which the Chamber received less than \$30,000 for their administration costs which included receiving applications, adjudication, grant recipient follow ups, and distribution of grant funds.

"We are truly proud of the tremendous work we have been able to accomplish alongside our Abbotsford Disaster Relief Fund partners," said former Abbotsford Chamber CEO Katerina Anastasiadis, noting that a key priority was to provide funding for impacted farmers and businesses with an immediate need for funds but also to keep the medium and long term rebuilding efforts in mind. "The agricultural businesses in Abbotsford are a key economic generator for the region, and all of Canada. The Chamber will continue its mission of supporting our community and agricultural businesses beyond this disaster and its ongoing impacts."



\$4,449,815

Total raised since November 2021.

\$978,386

Total distributed in 2023.

\$4,045,927

Total distributed since November 2021.

\$314,963

Total available to grant for 2024.

Gateway Community Church

Through their volunteer Abbotsford Disaster Relief Committee, they have worked with over 200 local families and individuals to assess and support those significantly impacted by the floods. Through their frontline work, they have requested and received multiple grants supporting critical needs including emergency food programs, rebuilding homes, replacing furniture and appliances and supported significant clean up efforts.

"We recognized that when people rebuilt their homes, they were going to have to buy furniture and new appliances. We made an appeal to the Abbotsford Disaster Relief Fund, and they were there within a matter of days to support us." - Milt Walker, Gateway Community Church



"Not sure how we can sum up in one sentence how grateful we are for the help we have received from Gateway Church and the Abbotsford Community Foundation but with the lack of assistance from the Government and Insurance, the funds we received from the Foundation was critical in helping us purchase necessary materials needed to help us rebuild." - Local family able to rebuild/restore their home after major flood damage

\$125,000 distributed to Great Commission Foundation for Hey Neighbour: These grants allowed them to facilitate their Support Centre which offered consultations for flood victims to help provide community connections, counseling partnerships, family sponsorships, access to their free store and benevolence gifts. During Christmas they provided holiday food hampers and gifts for ten families.

\$462,914 distributed to local charitable organizations for flood recovery: Max \$25,000 grants to local organizations - from Kids Play Foundation to Abbotsford Hospice Society, to Fraser Valley Child Development Centre, over 19 agencies applied and received funding to assist in their own recovery efforts and to help maintain operations and/or programming in the midst of flood impacts.

RECEIPT 210 Families Supported

Furniture Vouchers	165
Incidental Housewares Vouchers	129
Building Material Packages	50
Tool Vouchers	11

\$215,100 distributed through local churches including Arnold Community Church, Yarrow Mennonite Brethren Church, Yarrow Alliance Church, South Abbotsford Mennonite Brethren Church - everything from local community clean up efforts, to providing emergency meals, to events supporting youth mental health, and so much more.

\$127,192 distributed to Abbotsford School District: Multiple grants supporting everything from school meal programs, backpack supplies, to mental health initiatives and the restoration of an agricultural classroom.

\$1,254,100

Distributed through Gateway Community Church.

\$125,000

Distributed through Great Commission Foundation.

\$462,914

Distributed to local charitable organizations.

\$215,000

Distributed through local churches.

\$127,192

Distributed through the Abbotsford School District.

\$1,861,721

Distributed through the Abbotsford Chamber of Commerce.

New Endowment

The following new fund was established to provide strategic and intentional giving to causes that these donors care about most:

Brody Lomax Memorial

Brody passed away on August 9, 2023, too soon for us all and will be so greatly missed. Because of his ties to Robert Batemen Secondary, the family created a scholarship in his name for future graduates of the school who share Brody's love of art. He was a bright and talented young artist, receiving the top art student at graduation. He went on to study graphic design at Emily Carr University and also studied drafting at both UFV and KPU. In addition, Brody had also completed an introduction to welding at BCIT and was registered to start the welding foundation program. This endowment was created to honour his legacy and love of arts.

Endowed Donor Funds

Donor Advised Endowment Funds

Donor Advised Funds (DAF) allow donors to make annual grant recommendations to the charity or charities of their choice. Each year, the donor (or their designee) chooses which cause(s) the earnings on their endowment will go to. Gift once and have the opportunity to grant monies every year to different needs in community. ACF currently holds 19 Donor Advised funds.

Donor Designated Endowment Funds

Donor Designated Endowment Funds (DDF) are like the above DAF, but when the fund is initially set up, the recipient of the gift is selected on a permanent basis. While the DAF allows donors to support a different charity each year, a DDF ensures that the charity(ies) chosen will consistently receive a gift on an annual basis. Gift once to grant forever to the causes you care about. ACF currently holds 17 Donor Designated funds.

Agency Funds

Agency Funds provide organizations with a sustainable annual source of income that ensures they can offer their programs for the community, in perpetuity. This allows donors to make simpler bequests that will support the causes they care about over the long term, with annual grants that give the flexibility to organizations to address their most critical needs. ACF currently holds 14 Agency funds.

Emerging Funds

Do you, your family or friends want to set up an endowment fund of your own?

Not everyone can put aside enough money for an endowment right away, and that's okay. Our emerging funds are a place to start - where people can begin the process of contributing to what can be a lasting gift to provide sustainable support to local causes that are important to you.

Many people tend to equate endowment funds with millions of dollars. Not so! We believe everyone can be a philanthropist and we try to make setting one up as accessible as we can. Yes, an endowment must reach a minimum of \$10,000 before we can start granting. However, that total can be achieved over a few years. This allows people from a variety of financial backgrounds to create their own endowments. You can pool funds from family/friends, make monthly or annual donations or come up with other ways to create an endowment that represents your gifting goals. Want to learn more or talk about options in setting up an endowment fund that works best for you? Contact us today.

What's Your Story?

Whether your family moved here five years ago or 100 years ago makes no difference. You have a story about how you or your family got here and why.

Your story tells us what's important to you and to your family. It tells us what you value and how your life reflects your values.

We'd love to hear your story, and especially how we can work together as community builders by aligning your philanthropic vision with the community's needs.



What Do You Care About?

ACF gives individual donors, family foundations, businesses, and charitable organizations a number of ways to offer a sustainable way of funding the ever changing needs of our local community.

We help strategically focus your giving by designing creative, tax-smart, well-informed philanthropy and helping you decide on where and how to channel your giving to maximize a return on your investment for lasting impact.

First, choose a cause you're passionate about:



Second, choose how you want to help:

- Current needs: immediate, responsive grants in the community.
- Favourite charity: support an organization close to your heart.
- Scholarships and bursaries: help youth achieve their post secondary education goals.
- Programs/projects of your choice: play an active role in grant making to causes you care about most.

Third, make a commitment to giving:

All gifts, no matter the size, go towards creating a stronger, more caring community. There are many ways we can facilitate your gifting:

- Gifts of cash: to an existing fund, an emerging fund you create, or designated charity.
- Gifts of appreciated securities: reduce capital gains and get a charitable tax receipt to offset taxes on other income.
- Gift in your will: make a bequest or designate a portion of your estate as a legacy gift and get a charitable tax receipt to offset estate taxes.
- Life insurance: designate some or all the proceeds of a life insurance policy as a legacy gift or transfer a policy to ACF and receive tax receipts for any premiums paid during your lifetime.
- RRSP, RRIF or TFSA: make ACF a beneficiary towards a specific fund and receive significant tax benefits.
- Gifts of real property: homeowners may donate their home or other real estate holdings and receive a tax credit. You may be able to continue to live in your home for as long as you want with this option.

How To Get Started?

We are here to help magnify the impact of your giving goals and walk you through the process of figuring out what giving strategy best meets your needs. It starts with a conversation to learn about what you care about most and then about how you want to give to have a lasting impact in your community.

www.abbotsfordcf.org | 604.850.3755

Together we build a stronger, more caring community.

Abbotsford Community Foundation

201 – 2890 Garden Street, Abbotsford, BC V2T 4W7

Tel: 604-850-3755 • info@abbotsfordcf.org

Charitable Registration No. 88849 9241 RR0001

www.abbotsfordcf.org   



ABBOTSFORD
COMMUNITY
FOUNDATION